

I Love Museums

Guide to the arts and heritage 04

oct
—dec
2013

Singapore Biennale 2013 *If The World Changed*
26 October 2013 - 16 February 2014
Vernissage: 24 & 25 October 2013

Sharon Chin, *Mandi Buriqa (Flower Bath)*, 2013, collaborative performance and performance relics, dimensions variable, artist collection, Singapore Biennale 2013 commission. Image courtesy of Azrul K Abdullah.



About the National Heritage Board

Telephone: 6338 0000

Address:
61 Stamford Road,
#03-08 Stamford Court,
Singapore 178892

Websites:
www.nhb.gov.sg
www.museums.com.sg

Facebook:
facebook.com/ILoveMuseums

Twitter:
twitter.com/yesterdaysg

Blog:
Yesterday.sg

Snapshot of National Heritage Board museums and heritage institutions

The National Heritage Board (NHB) manages the following national museums and heritage institutions:

Asian Civilisations Museum
National Museum of Singapore
Peranakan Museum
Singapore Art Museum
Singapore Philatelic Museum
Reflections at Bukit Chandu
Malay Heritage Centre
Sun Yat Sen Nanyang Memorial Hall
Indian Heritage Centre (Opening in 2015)

Produced by:



National
Heritage
Board

20

YEARS of
HERITAGE
with YOU
1993–2013

Table of contents

02

CALENDAR
OF EVENTS

04

HIGHLIGHTS

12

WHAT'S ON

36

MUSEUM
MERCHANDISE

40

FOOD STOPS

Disclaimer: All rights reserved.

Materials in this publication may not be reproduced in part or in whole without written consent of National Heritage Board (NHB), the publisher. Information is correct at the time of printing. Copyright 2013.

Asian Civilisations Museum

last chance!

Exploring the Cosmos: The Stupa as a Buddhist Symbol

Now till 10 November 2013
p.12

now

Devotion and Desire

Cross-Cultural Art in Asia

New Acquisitions of the Asian Civilisations Museum

Now till 8 December 2013
p.10



now

Lacquer Across Asia

Now till 9 February 2014
p.12

National Museum of Singapore

10 oct

The Story of Kong Ngee
《光艺的故事》

10 October 2013 – 20 October 2013
p.20



25 oct

A Changed World: Singapore Art 1950s–1970s

25 October 2013 – 16 March 2014
p.19



28 nov

Special Guided Tour with Curator

28 November 2013
p.22



Peranakan Museum

13 oct

Straits Family Sunday

13 October, 10 November & 8 December 2013
p.23

Singapore Art Museum

now

Not Against Interpretation: Untitled

Now till 27 April 2014
p.26



now

In/sight: Abstract Art by Wu Guanzhong and Artists from Southeast Asia

Now till 30 April 2014
p.24

now

Singapore Biennale 2013

If The World Changed

26 October 2013 – 16 February 2014
p.4

Singapore Philatelic Museum

now

Snakes and Ladders

Now till 10 November 2013
p.28

now

Spice Is Nice

Now till May 2014
p.29

5 dec

Seeing is Believing: Unusual Stamps exhibition

5 December 2013 – May 2014
p.30



Others

now

Kindred Spirits: Dr. Sun Yat Sen, Singapore and Japan

Now till 1 December 2013
p.35



now

Ilham Alam: Nature and Healing in the Malay World

Now till 5 January 2014
p.16



now

Let's Play!

Tuesdays, Now till 25 March 2014
p.17

12 oct

Public Lecture Series Satu: Malay in Episodes

12 October & 2 November 2013
p.18

2 nov

Galleries Alive! Kampong Gelam Tales (A Dramatised Tour)

2 November & 25 December 2013
p.17

8 nov

Wan Qing CultureFest 2013

8 November 2013 – 1 December 2013
p.34



1
Portrait of Madam Wellington Koo by Charles Sharp (British, 1878–1951), 1921 Oil on canvas, 197 x 100 cm Gift of Lim and Tan Securities Pte Ltd in memory of Johnny and Nancy Lim

2
Moon Over Malaya (1957) Image courtesy of the family of Ho Kian-ngiap

3
Conversation Ho Kok Hoe (b. 1922) Mixed media 1977 Gift of Ho Kok Hoe Image © National Collection, Singapore

4
A Clear Day Yeo Hoe Koon (b. 1935) Oil on canvas c. 1976–1978 Image © National Collection, Singapore

5
Installation shot of Untitled by Anthony Poon

6
Flowers 1998, Singapore Singapore Philatelic Museum Collection These stamps are scented. Visitors can smell the scent of flowers.

7
Haori with Kanji characters "Kenbo" written by Dr. Sun Yat Sen to Umeya Shokichi

8
Malay Medicine Man Photo courtesy of the National Museum of Singapore

Calendar of Events

SINGAPORE BIENNALE 2013 IF THE WORLD CHANGED

Singapore Biennale 2013 *If The World Changed*

26 October 2013 – 16 February 2014
Vernissage: 24 & 25 October 2013
—
Bras Basah, Bugis Precinct, Our Museum@Taman Jurong

If you could change the world, what would it look like?

The *Singapore Biennale 2013* is the country's premier contemporary art exhibition. It returns this year with the title *If the World Changed*, and invites everyone to re-consider or re-imagine the world we live in.

Expect a diverse range of works from over 80 artists primarily with links to Southeast Asia, of which more than half are new commissions. The fourth edition of the Biennale draws on the expertise of twenty-seven curators from across the region, presenting a diversity of artistic responses with a distinctive Southeast Asian voice.

\$10

per adult

\$5

per Student* or Senior Citizen* aged 60 and above (Non-Citizen/Permanent Resident)

Held in the vibrant arts and cultural district, the Bras Basah. Bugis precinct, the *Singapore Biennale 2013* is organised by the Singapore Art Museum and supported by the Ministry of Culture, Community and Youth, National Arts Council and National Heritage Board in Singapore.

For more details, visit www.singaporebiennale.org

Admission Information

- Each ticket allows one-time entry to Singapore Biennale 2013 museum venues (including permanent galleries) and one complimentary Short Guide.
- Free admission for all visitors to Biennale artworks at Fort Canning Park, Our Museum @ Taman Jurong, National Library Building and Waterloo Centre.
- Free admission to all Biennale venues for visitors aged 6 years and below, full-time National Service men (NSF), teachers from local schools and senior citizens (age 60 and above) and students who are Singapore citizens or Permanent Residents.*

* Please produce valid identification to enjoy concession or free admission.

Bras Basah. Bugis precinct:

Fort Canning Park, National Library Building, National Museum of Singapore, Peranakan Museum, Singapore Art Museum (including SAM at 8Q), Singapore Management University, Waterloo Centre

Curators

Angkrit Ajchariyasophon
Aminuddin TH Siregar "Ucok"
Aye Ko
David Chew
Charlie Co
Kawayan de Guia
Fairuz Iman Ismail
Faizal Sidik
Ark Fongsmut

Abraham Garcia Jr.
Erin Gleeson
Tamares Goh
Misouda Heuangsoukhoum
Michelle Ho
Khairuddin Hori
Mia Maria
Nguyen Nhu Huy
Claro Ramirez

Seng Yu Jin
Tan Boon Hui
Tan Siuli
Tay Swee Lin
Charmaine Toh
Joyce Toh
Tran Luong
Naomi Wang
Yee I-Lann

Artists

Ahmad Abu Bakar
Irwan Ahmett & Tita Salina
Sookoon Ang
AX(iS) Art Project
Boo Junfeng
Chi Too
Sharon Chin
Chris Chong Chan Fui
Kiri Dalena
Marisa Darasavath
Leslie de Chavez
Guo Yixiu
Iswanto Hartono & Raqs Media Collective
Adrian Ho
Dusadee Huntrakul
Jainal Amambing
Joo Choon Lin
Toni Kanwa
Khvay Samnang
KOMVNI
Moon Kyungwon & Jeon Joonho
Lai Chee Kien
Erica Lai
Lam Hieu Thuan
Urich Lau
Le Brothers
Sean Lee
Lee Wen

Liao Jiekai
Hazel Lim
Lim Shing Ee & Kazunori Takeishi
Nikki Luna
Manny Montelibano
Kumari Nahappan
Nasirun
Ng Joon Kiat
Krit Ngamsom
Nge Lay
Nguyen Huy An
Nguyen Oanh Phi Phi
Nguyen Thi Hoai Tho
Nguyen Tran Nam
Nguyen Trinh Thi
UuDam Tran Nguyen
Nipan Oranniwesna
Anon Pairoi, Kamin
Lertchaiprasert, Patama
Roonrakwit, Samart
Suwannarat & Zcongklod
Bangyikhan
Bounpaul Phothyzan
Po Po
Poodien
Eko Prawoto
Anggun Priambodo
François Roche
Rosid

Sai Hua Kuan
Albert Samreth
Tisna Sanjaya
Angie Seah
Jeremy Sharma
Shieko Reto
Siete Pesos
Leroy Sofyan
Shirley Soh
Speak Cryptic
Prateep Suthathongthai
Svay Sareth
Talaandig Artists
Grace Tan
Royston Tan
Tan Wei Kheng
Boonsri Tangtrongsin
Tay Bee Aye
teamLab
Tran Tuan
Nopchai Ungkavatanapong
Suzann Victor
Oscar Villamiel
Vu Hong Ninh
Ken + Julia Yonetani
Mahardika Yudha
Robert Zhao Renhui
ZNC
Zulkifli Yusoff

Singapore Biennale 2013 Programmes

Artists and Curators in Conversation

Saturday, 26 October 2013, 11am – 5pm
 Sunday, 27 October 2013, 12pm – 5pm
 Singapore Art Museum, National Museum of Singapore, Peranakan Museum
Free with purchase of museum admission ticket

Join Singapore Biennale 2013 artists and curators as they reveal the processes behind their work in a series of illuminating talks and discussions throughout the exhibition's opening weekend.

Public Performance: Mandi Bunga

Saturday, 26 October 2013, 6pm
 Venue to be announced
Free admission

Witness this beautiful performance at sunset of a mass *mandi bunga*, or flower bath, by a group of approximately 100 collaborators led by artist, Sharon Chin. This performance is part of the artist's Biennale project located at the Singapore Art Museum.

Film Screening: Asian Premiere of *Memories of Overdevelopment Redux* (1983–2013 version)

Saturday, 26 October 2013, 7pm
 Sunday, 27 October 2013, 2pm
 Singapore Art Museum, Moving Image Gallery
Free admission (Limited spaces. Registration required.)

The never-ending film-in-progress by Filipino artist Kidlat Tahimik, featuring a post-screening discussion with the director.



Artists Workshops

Saturdays, November 2013 – February 2014,
 2pm – 4pm
 Singapore Art Museum, Glass Hall & Peranakan Museum
\$19 (Tickets available at the Singapore Art Museum and SISTIC)

Take part in a series of hands-on workshops led by the Singapore Biennale 2013 artists and explore their practice and works in the exhibition. These workshops will be held throughout the duration of the Biennale.

Limited spaces are available. For ticket availability at the door, please call SISTIC.

The Mapping Series

Saturdays, November 2013 – February 2014,
 2pm – 4.30pm
 Singapore Art Museum, Glass Hall & National Library Building, Level 1, Seminar Room
Free admission

The *Mapping Series* of lectures and artist talks is jointly organised by the Singapore Art Museum and National Library Board, in conjunction with Singapore Biennale 2013. Engaging elements of social sciences, cultural anthropology and arts and design, this seven-session series encourages a multi-layered and multi-disciplinary exploration of some salient exhibition themes.

Registration is required. Visit www.singaporebiennale.org for registration details.



Uudam Tran
 Nguyen, *Waltz of the Machine Equestrians* – *The Machine Equestrians* (detail), 2012, single-channel video, duration 3:00 mins, artist collection. Image courtesy of the artist.



Curator Tours

Wednesdays, 6, 13 & 20 November, 4 & 18 December 2013, 7.30pm – 8.30pm
 Various Biennale venues

\$15 (Tickets available at the Singapore Art Museum, National Museum of Singapore, Peranakan Museum and SISTIC.)

Join the Singapore curators of the Biennale on special tours of selected artworks that focus on and examine specific themes explored in this Biennale.

| Date | Speaker & Topic | Venue |
|------------------|---|----------------------|
| 6 November 2013 | Director Tour by Dr. Susie Lingham | Singapore Art Museum |
| 13 November 2013 | <i>Art and Ego – Locating the Artist</i> by David Chew | Singapore Art Museum |
| 20 November 2013 | <i>Art and Essence – State of the "Material"</i> by Tamares Goh | Singapore Art Museum |
| 4 December 2013 | <i>Art and Displacement – Trapped: Our Cages Within</i> by Khairuddin Hori and Naomi Wang | Singapore Art Museum |
| 18 December 2013 | <i>Art and Communities – The More We Get Together</i> by Fairuz Iman Ismail | Peranakan Museum |

Limited spaces are available. For ticket availability at the door, please call SISTIC.



Khvay Samnang,
Untitled, 2011–2013,
 5-channel video,
 sound, edition of
 3, artist collection.
 Image courtesy of
 the artist.

Education & Outreach

Educators' Training Sessions

Monday, 18 November 2013, 3pm – 5pm*
 Wednesday, 20 November 2013, 3pm – 5 pm*
 Singapore Art Museum, Glass Hall
Free admission

The Singapore Biennale 2013 educators' training sessions will familiarise educators with selected artworks and artists so that they can plan lessons on or school visits to the Biennale. Drawing on the inquiry-based approach to facilitate the appreciation of contemporary art, the sessions will also guide educators on how to make the best use of the Singapore Biennale 2013 Artist Folios and will include a tour of selected artworks.

**Educators are required to sign up for one session only. All training sessions are for educators only. Free admission with limited spaces. Registration required. Please email your name, school, contact number, the subject you teach and the age of your students to nhb_sam_education@nhb.gov.sg*

Tours and Talks for Teachers

Thursday, 21 November 2013, 3pm – 4.30pm*
 Thursday, 28 November 2013, 3pm – 4.30pm*
 Singapore Art Museum
Free admission

The Singapore Biennale 2013 tours and preview talks will give an overview of the artworks in the Biennale to educators who are preparing to bring students for a visit. Singapore Art Museum curators will explain key concepts and highlight selected works during these sessions.

**Educators are required to sign up for one tour only. All tours and talks are for educators only. Free admission. Registration required. Please email your name, school, contact number, the subject you teach and the age of your students to nhb_sam_education@nhb.gov.sg*

School Workshops

Weekdays, 10am or 2.30pm
 Singapore Art Museum

Inspired by the artworks of the Singapore Biennale 2013, these educational workshops will offer students a multidisciplinary and holistic contemporary art experience. These workshops range from art-making sessions to speech and drama puppet shows that encourage originality and the development of language skills and self-confidence.

The School Workshops are available for school bookings only. Please download and complete the Educational Workshop Booking Form at www.singaporeartmuseum.sg under the School Programmes page or at www.singaporebiennale.org and email it to nhb_sam_education@nhb.gov.sg. Each workshop is limited to a minimum of 20 and maximum of 40 participants per session.



Toni Kanwa, *Cosmology of Life*, 2013, installation, wood, dimensions variable, artist collection. Singapore Biennale 2013 commission. Image courtesy of the artist.



Resources

Young Art Writers Programme

To stimulate critical and creative thinking about contemporary art, and encourage aspiring young writers, the Singapore Biennale developed the Young Art Writers Programme to provide students with a literary platform to respond to the exhibition artworks. In the programme, participants will work with recognised writers and curators, and selected pieces will be published in TODAY newspaper, as well as other online platforms.

For more details, visit www.singaporebiennale.org

Artists-in-Schools

| | |
|----------------|--|
| Erica Lai | <i>The Old Man and the Sea</i> Singapore Art Museum at 8Q |
| Hazel Lim | <i>A Botanical and Wildlife Survey – Singapore</i> Peranakan Museum |
| Tay Bee Aye | <i>Knot, Play, Rest</i> Taman Jurong Community Club |
| Zinc Nite Crew | <i>Gardens, by the Way</i> National Library Building, Level 1 Concourse |

As part of efforts to broaden the range of artistic projects in the Biennale, and to empower and engage students in the art-making process of the Biennale, Singapore Art Museum launched the Artists-in-Schools project in January 2013. In this project, students worked with local contemporary artists to create artworks responding to the Singapore Biennale title, *If the World Changed*.

In partnership with Singapore Art Museum, four artists and artist collectives — Erica Lai, Hazel Lim, Tay Bee Aye and Zinc Nite Crew (ZNC) — mentored and collaborated with students from local schools in art projects that explored topics such as environmentalism, biodiversity and community ties.

Singapore Biennale 2013 App

Download the Singapore Biennale 2013 smartphone application to plan your visit, and find out more about the artists and artworks. Choose one of two programmed trails, or create your own by selecting your favourite artworks. Stand a chance to win exclusive Singapore Biennale merchandise in a quiz about the artworks!

The Singapore Biennale 2013 smartphone application is available for free download on iTunes and the Google Play store.

Singapore Biennale 2013 Blog

An ongoing report of the Biennale, the Singapore Biennale 2013 blog hosts artist interviews, curator essays, articles and photographs contributed by arts administrators and members of the arts community, and many more enjoyable reads. Read more about the Biennale right now at singaporebiennale2013.tumblr.com

Artist Folios

The Singapore Biennale 2013 Artist Folios are educational resources that educators, parents, students and art enthusiasts can use to explore and engage deeply with SB 2013 artworks. Each of the featured artists has a dedicated folio which contains write-ups on their practice and artwork, as well as suggested activities, discussion questions, further reading and viewing lists that audiences can use to plan or enhance their visit.

Visit www.singaporebiennale.org to download the free Artist Folios.



Devotion and Desire Cross-Cultural Art in Asia New Acquisitions of the Asian Civilisations Museum

Now till
8 December
2013

—
Asian
Civilisations
Museum

—
Admission
charges apply

For thousands of years, the cultures of Asia have traded, interacted, and exchanged ideas. This exhibition focuses on the artistic results of these contacts. The objects show how religions moved from region to region, how special objects were eagerly sought in lands far away, and how new works of art were created by the blending of different traditions.

In many cases, objects were produced for trade and export. Other examples document the desire for beauty. The sheer joy and fascination with the exotic can also be witnessed in cross-cultural art. In many different ways, the encounters between cultures have shaped our world, and they affect the way objects look. Global networks of trade and communication were already active in Asia more than two thousand years ago. This exhibition draws from that long history, and provides the public an opportunity to see many of these new and diverse acquisitions for the first time.

Citizens and Permanent Residents (PRs) enjoy free admission to this exhibition.



Dragon robe
China, Qing
dynasty, early 18th
century
Brocaded silk, gold
wrapped threads,
137.8 × 204 cm



Bowl with seated couple
Iran, perhaps Kashan,
Seljuk period, late 12th or
early 13th century
Frit body, diameter
20.8 cm



Ritual food vessel
(*gui*)
China, Shaanxi
province, early
Western Zhou
dynasty, late 11th to
10th century BC
Bronze,
22.1 × 27.6 × 18.6 cm





Lacquer Across Asia

Now till
9 February
2014

— Asian
Civilisations
Museum

— Admission
charges apply



Covered box:
lychees
China, Ming
dynasty, dated 1522
Carved lacquer,
diameter 8.8 cm

Explore the art of lacquer from China and mainland Southeast Asia. A prized commodity traded and presented to dignitaries, lacquer is a precious material that signifies wealth and social standing. Different decorative techniques and styles were created in response to local needs and tastes. Chinese lacquer fashioned for literati and the imperial court, as well as Burmese and Thai examples made for Buddhist merit-making rituals, illustrate the wide variety.

Citizens and Permanent Residents (PRs) enjoy free admission to this exhibition.

Exploring the Cosmos: The Stupa as a Buddhist Symbol

Now till
10 November
2013

— Asian
Civilisations
Museum

— Free admission



Kalachakra mandala
Himalayas, ca 2011
Watercolour and
gold on canvas
Gift of the former
Prime Minister of
Singapore, Mr Lee
Kuan Yew

The stupa is the principal architectural form of Buddhism and is found across Asia. This exhibition features 29 works from the Asian Civilisations Museum's collection, covering a period from the 3rd to the 19th century, as well as a hanging mobile stupa by the internationally renowned Thai artist Jakkai Siributr.



ACM After Dark: Mystic Asia

Saturday, 26
October 2013
8pm – 12am

— Asian
Civilisations
Museum

— Free admission

The Asian supernatural comes to life at the museum after dark.

Be thrilled by activities and performances inspired by the objects from the galleries and Asian folklore. Enjoy a ghostly movie screening, hear haunting tales in the galleries, and make your own spooky souvenir to take home.

Devotion and Desire Festival

Saturday, 30
November 2013
1pm – 5pm

— Asian
Civilisations
Museum

— Free admission

Cultures converge at the Asian Civilisations Museum in a day of fun-filled programmes. From north to south, east to west: meet interesting characters in special tours or enjoy workshops and performances inspired by the *Devotion and Desire* collection.



Curator Tour – *Devotion and Desire*

Fridays,
4 October &
6 December
2013
7.30pm –
8.30pm

–
Asian
Civilisations
Museum

\$15
per person
(Booking is
required)

Join curator Clement Onn for an insider tour of the special exhibition, *Devotion and Desire*. Learn how the cultures of Asia have interacted with each other and the wider world, and see objects that were created from those contacts.

RSVP at nhb_acm_prog@nhb.gov.sg to reserve a space and pay on the day of the programme.



► Presentation of a cheetah, from an *Akbarnama*. Mughal India, around 1595. Watercolour and gold on paper.



Afternoon@ACM: Start with Art

Saturdays,
5 October,
2 November & 7
December 2013
2pm – 5pm

–
Asian
Civilisations
Museum

–
Programmes are
complimentary
with purchase of
museum admis-
sion ticket

Families can interact with art and heritage in creative ways on this Saturday afternoon at the museum. Enjoy art from a different perspective through engaging tours, and explore our Cabinet of Curiosities to get up close and personal with our handling collection. Afterwards, create and bring home a craft inspired by *Devotion and Desire*.

Citizens and Permanent Residents (PRs) enjoy free admission to the Asian Civilisations Museum.



Lunchtime Concerts at ACM

Fridays,
4, 11, 18 & 25
October, 1, 8 &
15 November
2013
12.30pm –
1.30pm

–
Asian
Civilisations
Museum

–
Free admission

Featuring talented musicians from the Yong Siew Toh Conservatory of Music, the popular lunchtime concerts return in October to the Asian Civilisations Museum with exciting classical and jazz music from winds, strings, brass, and woodwinds.



Drawing in the Galleries

Fridays, 25
October, 15 &
29 November
2013
6.45pm –
8.45pm

–
Asian
Civilisations
Museum

\$15
per adult per
session

Discover rich patterns and details in art and train your hand, eye, and mind in this series of drawing workshops for adults. An instructor will provide insights on drawing techniques based on the *Devotion and Desire* exhibition.

This series is open to participants of all drawing skill levels.

RSVP at nhb_acm_prog@nhb.gov.sg to reserve a space and pay on the day of the programme.

\$40
for one-time
booking of all
three sessions
(Booking is
required)

Ilham Alam: Nature and Healing in the Malay World (*Ilham Alam: Tradisi Perubatan Dunia Melayu*)

Now till 5
January 2014
—
Malay Heritage
Centre, Gallery
1 & 2

—
Admission
charges apply

The earliest medicines were derived from compounds of plants and animal parts. In spite of the advances of modern biomedicine, many communities around the world continue to rely on the traditional medical practices of their respective cultures. In fact, many herbal remedies have been lauded for their perceived “holistic” healing benefits, accessibility and affordability.

Ilham Alam: Nature and Healing in the Malay World examines the ways in which various historical Malay communities have harnessed the bounty of flora

and fauna to promote health and healing. It also explores the corpus of traditional Malay medicine as a specialised form of local knowledge especially in terms of early Malay conceptualisations of the human body as well as human relationships to the natural environment.

In partnership with the Singapore Botanic Gardens (NParks), the exhibition features an outdoor plant maze, rare artefacts and archival materials including 19th century Malay medicinal manuscripts and tools of trade of traditional Malay healers.

Citizens and Permanent Residents (PRs) enjoy free admission to this exhibition.



Malay Medicine Man
Photo courtesy of the
National Museum of
Singapore

Galleries Alive!: Kampong Gelam Tales (A Dramatised Tour)

2 November &
25 December
2013
10am & 4pm
—
Malay
Heritage Centre
—
Free admission

Journey through the galleries of Malay Heritage Centre with special characters and learn more about the history of Kampong Gelam and the Malay communities in Singapore!

Registration for performances and tours are required. To register, please email your contact details to NHB_MHC_Programmes@nhb.gov.sg



Let's Play!

Tuesdays,
Now till 25
March 2014
11am & 2pm
—
Malay
Heritage Centre
—
Free admission

Learn more about traditional Malay games at the Malay Heritage Centre! Learn skills you will need for the *wau* (traditional Malay kites), *main lereng* (wheel spinning), *congkak* (traditional Malay board game), *batu serembat* (five stones) and more! This 45 minutes workshop will also invite participants to create and bring home their own traditional games through fun craft activities.

Walk-ins are welcome. Registration is required for group bookings. For more information about the games available or registration, please call 6391 0450 or email nhb_mhc_programmes@nhb.gov.sg



Public Lecture Series Satu: Malay in Episodes

Selected Saturdays
2pm – 3.30pm
–
Malay Heritage Centre, Auditorium

Public Lecture Series Satu is an annual monthly lecture series which features topics related to the Malay Heritage Centre's permanent galleries as presented by academics, community and cultural leaders. This year's theme, Customarily 'Melayu', explores how adat relates to the understanding of Malay culture and the formation of Malay identity as a whole. Upcoming lectures below:

–
Free admission

The Malay Heritage Centre reserves the right to change the schedule of the lectures. Registration is required for all lectures. To register, please email your name and contact details to NHB_MHC_Programmes@nhb.gov.sg

**Adat (Malay Custom) & Music
by Dr Margaret Kartomi
(in English)**
Saturday, 12 October 2013

Drawing on Dr. Kartomi's ethno-musicological expertise, particularly with regards to her fieldwork in Riau and Sumatra, the talk is aimed at examining the concept of *adat* in relation to traditional Malay music. Dr Kartomi is a Professor of Music at the Faculty of Arts, Monash University. With a particular interest in Indonesia, her research focuses on the representations of identity through music which includes studies on performance, instruments, lyrical texts, sound and visual art as expressive modes of ethnicity, gender, religion, and history.

**Jalan Kubor, Kampong Gelam:
Pusara Bersejarah Singapura
(Singapore's Historic Cemetery:
Jalan Kubor, Kampong Gelam)
(in Malay)**
Saturday, 2 November 2013

The talk will re-acquaint participants with one of the oldest cemeteries in Singapore. Dr Imran is an Assistant Professor at the Department of Architecture, School of Design & Environment, National University of Singapore. His scholarship complements morphological studies on historically cosmopolitan settlements and sites with analyses on these locations' social histories.



Landscape
Cheong Soo Pieng
(1917–1983)
Oil on canvas
1963
Image © National
Collection, Singapore



A Changed World: Singapore Art 1950s–1970s

25 October
2013 –
16 March 2014
10am – 7pm

–
National
Museum of
Singapore,
Exhibition
Gallery 2,
Basement

–
Free admission

A Changed World explores the development of Singapore art in light of the rapid changes that took place in Singapore after World War II. It charts the artists' own engagement with changes in Singapore's political, economic, social and urban landscape, and how they expressed their responses through their art. The exhibition spans Singapore's immediate post-war period, from which both an artistic and national consciousness began to emerge, to the 1970s, when a Singaporean identity came to be solidified while artists adopted a new pictorial language that was more international. The exhibition will feature over 120 paintings, drawings, prints and sculptures from the National Collection.

Supporter:

LEE FOUNDATION

A Parallel Event of:

SINGAPORE
BIENNALE
2013
IF THE
WORLD
CHANGED



▼
Moon Over Malaya
(1957)
Image courtesy
of the family of
Ho Kian-ngiap

The Story of Kong Ngee

《光艺的故事》

In Cantonese with English Subtitles

10 October
2013 – 20
October 2013
Various Timings

–
National
Museum of
Singapore,
Gallery Theatre,
Basement

\$9
(includes *SISTIC*
handling fees;
concessions
available)

Amongst the Chinese movie moguls to have emerged from Singapore after the Second World War, Run Run Shaw of Shaw Organisation and Loke Wan Tho of Cathay Organisation are the most frequently cited examples. Few have heard about the glorious journey of the Ho family's Kong Ngee Company Limited, which went from film distribution to owning cinema halls across Southeast Asia and eventually making films through the Kong Ngee Film Company.

The Story of Kong Ngee charts the rise and fall of the Ho brothers' film studio and how they came to dominate the Chinese film circuit with a successful venture into motion picture production. A special showcase of 15 Cantonese films made by Kong Ngee during the 1950s

and 1960s, including the famed "Nanyang Trilogy", offers visions and memories of Singapore in the past which continue to resonate in the present. From detective mysteries to melodramas and romantic comedies, Kong Ngee films reflect an exuberant modernity, launching the careers of celebrated movie stars such as Patsy Kar Ling, Nam Hung and Patrick Tse Yin. *The Story of Kong Ngee* offers a glimpse into the studio's distinguished output, with a series of films that exemplify the unique artistic heritage that Kong Ngee sought to contribute to the film industries of Hong Kong and Singapore.

For more information and the full film schedule, please visit www.nationalmuseum.sg/TheStoryOfKongNgee

▲
Moon Over Malaya
(1957)
Image courtesy
of the family of
Ho Kian-ngiap



Sponsor:



Hong Kong Economic & Trade Office (ASEAN)
Hong Kong SAR Government

With Support From:



Official Online Partner:



Special Guided Tour with Curator

By *Szan Tan*, Senior Curator, National Museum of Singapore

Thursday, 28
November 2013
7.30pm – 9pm

— National
Museum of
Singapore
Meeting point:
Entrance of
Exhibition
Gallery 2,
Basement

— Free admission

What place does abstract art and Chinese ink painting have in the history of Singapore's visual art and her historical development? And what is the relationship between Western abstraction and Chinese ink painting? What are the sources of inspiration for the works of second-generation artists in Singapore? Join Szan Tan, co-curator of the exhibition *A Changed World: Singapore Art 1950s–1970s* in a special tour as she journeys through their works and analyse their individual responses to the changed world around them in the late 1960s to 1970s. Szan has worked as a curator since 1997 and has an interest in paintings, textiles and folk cultures.

Limited to 30 participants per tour. Registration is required. To register, please email your contact details to nhb_nm_lectures@nhb.gov.sg



A Clear Day
Yeo Hoe Koon
(b. 1935)
Oil on canvas
c. 1976–1978
Image © National
Collection,
Singapore



Straits Family Sunday

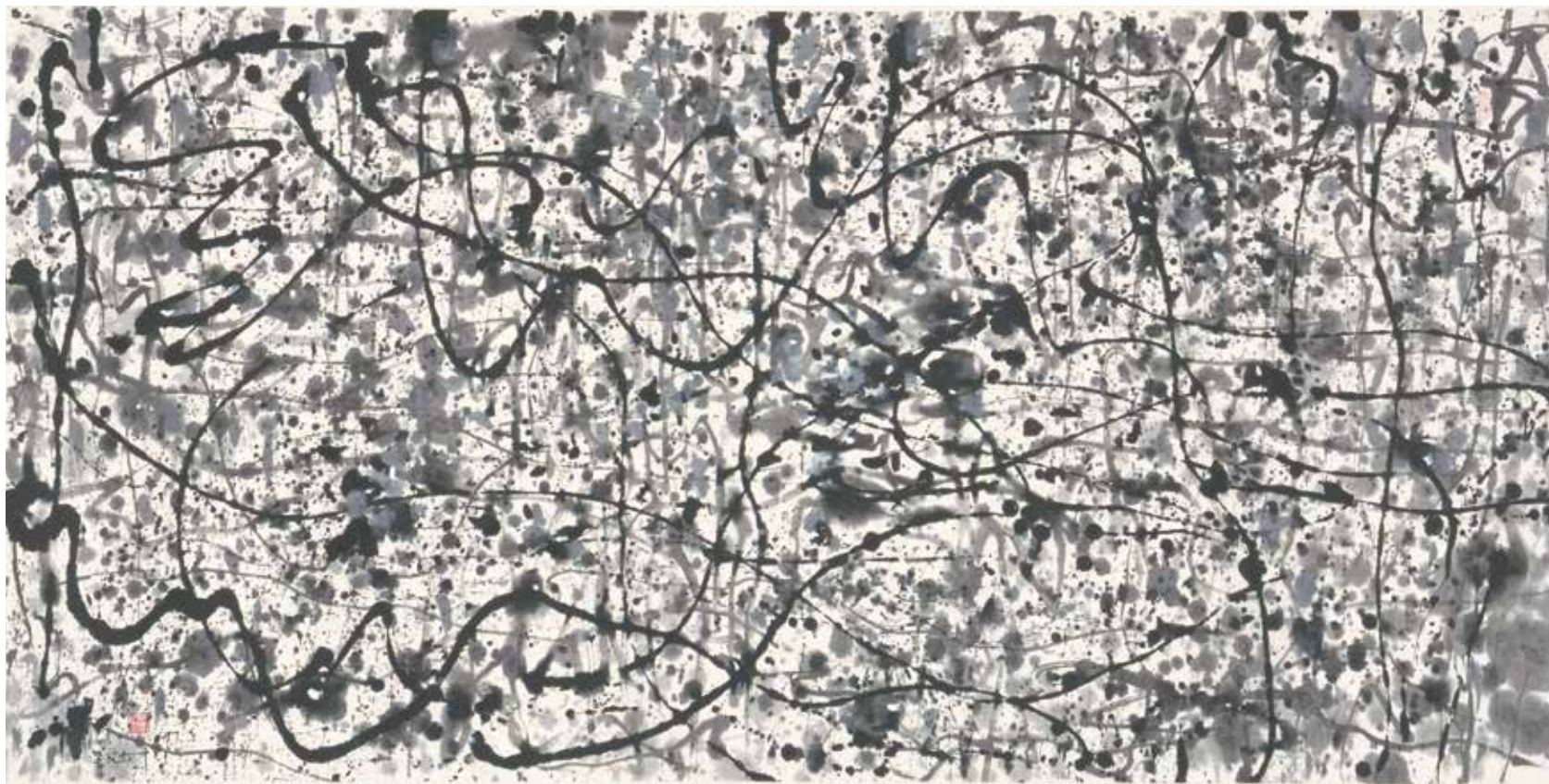
Sundays,
13 October,
10 November
& 8 December
2013
1pm – 5pm

— Peranakan
Museum

— Programmes
are compli-
mentary with
purchase of
museum admis-
sion ticket

Join us on the second Sunday of every month for this drop-in programme. Craft something to take home with you based on the museum's collection, or go on a special, themed tour of the galleries. Dress up with the whole family in a batik shirt or sarong kebaya. See the handling collection up close or relax with a good book in our reading corner. Enjoy a fun-filled Sunday for the whole family at the Peranakan Museum.

Citizens and Permanent Residents (PRs) enjoy free admission to the Peranakan Museum.



Wu Guanzhong,
*Wild Vines with
Flowers like Pearls*,
1997, ink on paper,
89 × 179 cm, gift of
the artist, collection
of National Heritage
Board

In/sight: Abstract Art by Wu Guanzhong and Artists from Southeast Asia

Now till
30 April 2014
—
Singapore
Art Museum

—
*Admission
charges apply*

How does the abstraction of Wu Guanzhong relate to the abstraction of artists in Southeast Asia? This exhibition, titled *In/sight: Abstract Art by Wu Guanzhong and Artists from Southeast Asia*, presents a selection of abstract works from the national collection to illustrate the diverse motivations for abstraction amidst distinct and varied backgrounds.

Wu Guanzhong (1919–2010), one of the foremost painters in Chinese modern art, was a leading exponent of abstraction in China. Wu saw form as an important component in appreciating a work of art, seeing beauty in formal visual elements like line, shape, colour, texture and composition. These were of critical concern, much more than subject matter and physical resemblance to an object in reality.

This focus on form is likewise evident in the abstract works of artists in Southeast Asia. Many artists in Southeast Asia engaged with abstraction as part of their grappling with the modernisation of art in their local contexts. Works by Southeast Asian artists such as Anthony Poon, Latiff Mohidin, Ahmad Sadali and Damrong Wong-Uparaj will also be featured in the exhibition.

This is a special research exhibition by the National Art Gallery, Singapore, held on the premises of the Singapore Art Museum.

Citizens and Permanent Residents (PRs) enjoy free admission to this exhibition.

Not Against Interpretation: Untitled

Now till 27 April 2014

— Singapore Art Museum

— Admission charges apply

While the appreciation of art has largely been perceived to be a visual affair, it is also a process that is often mediated by text. After all, artistic intentions and artwork subject matter are frequently conveyed to viewers through words, writings, and most of all, artwork titles.

If names matter, what can we say about untitled artworks that seem to say nothing, or quite possibly everything? To what extent do text and image attach meaning to art? Without titles and established commentaries, is it yet possible to gain a genuine encounter with art?

Untitled, the second edition in the Singapore Art Museum's *Not Against Interpretation* exhibition series, draws from a selection of the National Heritage Board collection of works by Singapore artists that are untitled.

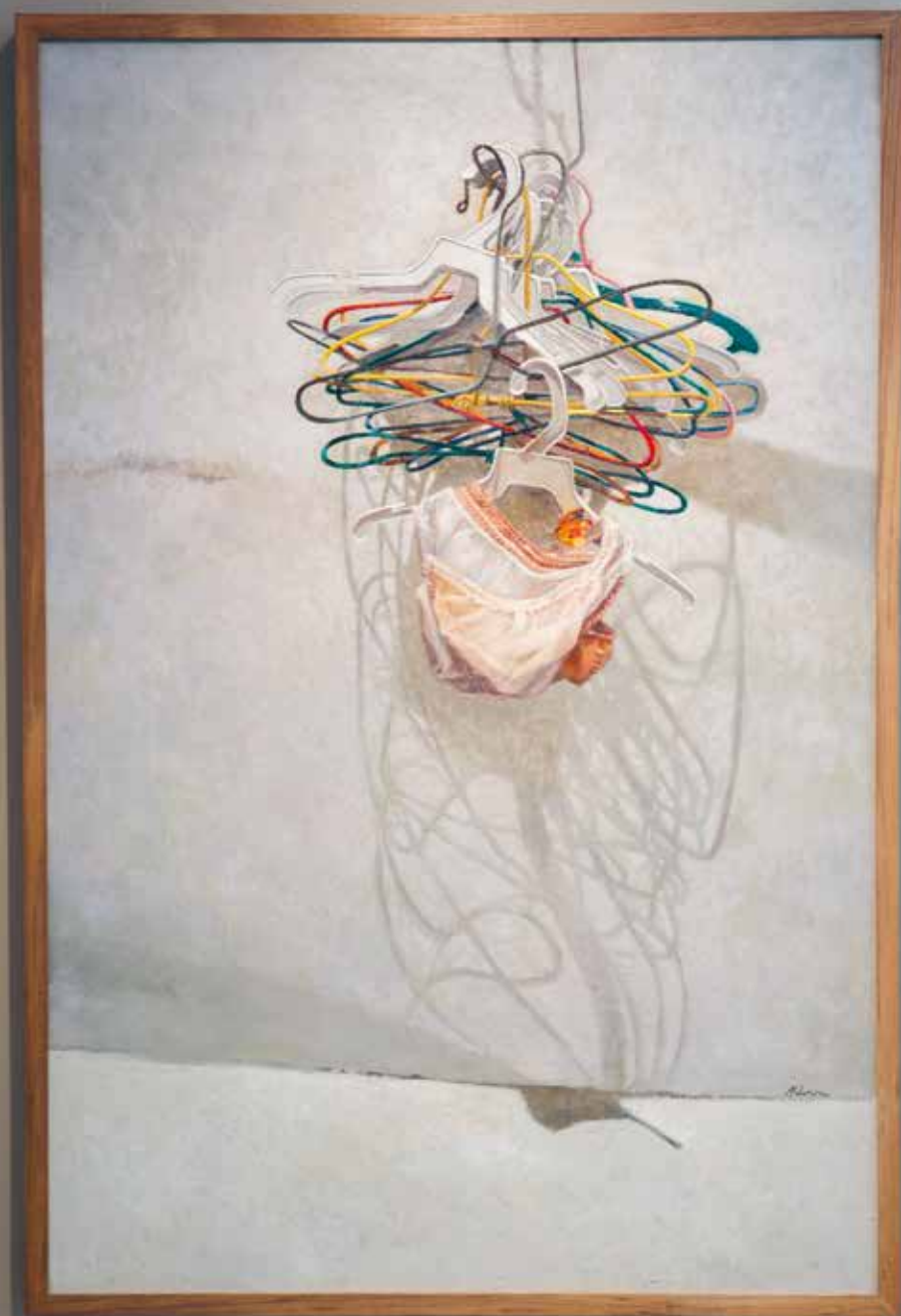
Citizens and Permanent Residents (PRs) enjoy free admission to this exhibition.

While artists' motivations for presenting their works as untitled ones may vary, many untitled works are frequently meant to allow viewers to discover meaning through their own perspectives. Besides artistic intent, viewers' interpretations of artworks also play a significant role in the definition of an artwork. In this exhibition, visitors are welcome to suggest suitable titles, placed alongside the artwork, as part of the exhibition objectives of opening up new readings in the experience of contemporary art.

Not Against Interpretation is an experimental platform aimed at nurturing appreciation for contemporary art, and invites visitors to interpret the artworks in their own way based on their experiences with the artists' works.



Installation shot of *Untitled* by Angeline Choo Ai Loon



Installation shot of *Untitled* by Anthony Poon





Snakes and Ladders

Now till
10 November
2013

— Singapore
Philatelic
Museum

— Admission
charges apply

Did you know that snakes cannot move backwards and they have very poor hearing? With limited eyesight and hearing, snakes have developed a very good sensing tongue. Discover more interesting facts and myths about this scaly but not slimy creature through stamps and interactive displays at this exhibition held in the children's gallery. The exhibition is held in conjunction with the zodiac year of the snake.

Citizens and Permanent Residents (PRs) enjoy free admission to this exhibition.

Spice Is Nice

Now till
May 2014

— Singapore
Philatelic
Museum

— Admission
charges apply

“Spice Is Nice” exhibition traces the voyages of discovery, the history of the spice trade and its impact on Singapore, traditional cures and flavours of regional cuisine.

During the 15th to 17th century, European countries such as Spain, Portugal and the Netherlands sent ships and men to track down the origins of spices.

Learn about some of the explorers (Christopher Columbus, Vasco da Gama and Ferdinand Magellan) who made significant contributions to the discovery of the origins of spices, and in the process, discovered new lands and people.

Experience life at sea as encountered by early immigrants from Southern China — in a recreated dark and cramped cargo hold of a ship, complete with sound effects and creepy pests. Touch, feel and smell spices that are commonly used in Singapore such as pepper, cinnamon, clove and nutmeg. Did you know that some of these spices were once worth their weight in gold? Find out interesting trivia about these spices.

Discover the areas of crop cultivation in Singapore for gambier, pepper, nutmeg, sugarcane, coconut and lemongrass in the mid-late 1800s. Then, learn about notable people associated with spice and other crops. They include José Almeida, Syed Sharif Omar Aljunied, Tan Tock Seng, among others.

Citizens and Permanent Residents (PRs) enjoy free admission to this exhibition.





Seeing is Believing: Unusual Stamps

5 December
2013 – May
2014

– Singapore
Philatelic
Museum

– Admission
charges apply

Have you seen stamps that are made of materials other than paper? Come and view a display of unusual stamps from Singapore and overseas from the museum's permanent collection. Discover quirky features on these little treasures that tickle your five senses of sight, smell, hearing, taste and touch.

Put your nose to stamps that smell of familiar scents like flower, coffee and chocolate. Feel stamps made of different materials such as flockage, wood, silk and lace. See stamps that glow in the dark and those that feature 3D images. Listen to stamps that can play the national anthem, folk songs, or narrate a poem. There are even stamps that taste of chocolate!

Don't believe what you had just read? Come and see the exhibition for yourself!

Citizens and Permanent Residents (PRs) enjoy free admission to this exhibition.



Flowers
1998, Singapore
Singapore Philatelic
Museum Collection
These stamps are
scented. Visitors
can smell the scent
of flowers.



Lace
2000, Switzerland
Singapore Philatelic
Museum Collection
This stamp is made
of lace material.
Visitors can see it up
close and find out
how this lace stamp
is made.



Spicy Saturday

Saturday, 12
October 2013
10am – 12pm

– Singapore
Philatelic
Museum

\$20
per parent-child
pair

Join us as we explore the interesting and attractive *Spice Is Nice* exhibition, and go on a walk to Fort Canning Garden to learn about spices, their origins and uses. Complete a special origami spice frame to take home. Great for parent and child bonding!

This programme is recommended for adults and children aged between 5 to 12 years old. All children must be accompanied by an adult. This programme runs with a minimum of 7 persons and a maximum of 15 persons. To register, please contact Laura Tan at 6513 7348 or email: Laura_Tan@nhb.gov.sg

November – December 2013 School Holiday Programmes



The Spice Trail

19 November
& 4 December
2013
10am – 12pm

–
Singapore
Philatelic
Museum

\$15
per person

Visit the *Spice Is Nice* galleries and learn about early explorers. Find out how spices can be used as traditional cures and in regional cuisine.

Go on a walking trail to Fort Canning Park to see spice plants and then create a special spice craft.

This programme is recommended for children aged between 7 to 12 years old. For more details, please contact Laura Tan at 6513 7348 or email: Laura_Tan@nhb.gov.sg

Overnight Adventure at Singapore Philatelic Museum

Session 1:
Thursday,
21 November
2013, 6pm –
Friday,
22 November
2013, 9am

Session 2:
Thursday,
5 December
2013, 6pm –
Friday,
6 December
2013, 9am

–
Singapore
Philatelic
Museum

\$80
per person

Check-in at the Singapore Philatelic Museum for a night of adventure, games and craft! Meet new friends, learn about the 'King of Hobbies' and enjoy the rare opportunity of sleeping among stamps! Bring along a sleeping bag, jacket, pyjamas, fresh change of clothing and toiletries. Includes dinner, supper and breakfast.

This programme is recommended for children aged between 7 to 12 years old. For more details, please contact Lily at 6513 7347 or email: Lily_Samuel@nhb.gov.sg



Mailboxes

27 November &
12 December
2013
10am – 12pm

–
Singapore
Philatelic
Museum

\$25
per person

Have you ever wondered what the inside of a postbox looks like? View miniature postboxes from around the world, discover interesting facts about postboxes, and find out how mail is delivered. You can also paint and decorate your very own tin mailbox!

This programme is recommended for children aged between 7 to 12 years old. For more details, please contact Lily at 6513 7347 or email: Lily_Samuel@nhb.gov.sg

Unusual Stamps Workshop

3 & 13
December 2013
10am – 12pm

–
Singapore
Philatelic
Museum

\$15
per person

Do you know that not all stamps are printed on paper? Some are made of unusual materials like wood, lace, foil, and some even smell like chocolate! Explore these exciting stamps then design your very own unusual stamp!

This programme is recommended for children aged between 7 to 12 years old. For more details, please contact Lily at 6513 7347 or email: Lily_Samuel@nhb.gov.sg

Wan Qing CultureFest 2013

8 November
2013 –
1 December
2013
10am – 5pm

– Sun Yat Sen
Nanyang
Memorial Hall

– Programmes
are compli-
mentary with
purchase of
museum admis-
sion ticket

The *Wan Qing CultureFest* is back to inject more life and excitement to the Balestier district! Look out for an exciting line-up of performances by students and Singapore artistes, public lectures, craft demonstrations, music, dance, games and more as we deliver memorable cultural treats in an educational and fun manner for you and your family. Celebrate cultural diversity at the Sun Yat Sen Nanyang Memorial Hall this November as we delve into interesting topics relating to Chinese history and culture through more than 20 different activities. All activities are free but registration may be required for some programmes. For more details, visit www.wanqingyuan.org.sg

Citizens and Permanent Residents (PRs) enjoy free admission to the Sun Yat Sen Nanyang Memorial Hall.



Haori with Kanji characters "Kenbo" written by Dr. Sun Yat Sen to Umeya Shokichi

Kindred Spirits: Dr. Sun Yat Sen, Singapore and Japan

Now till
1 December
2013

– Sun Yat Sen
Nanyang
Memorial Hall

– Admission
charges apply

Kindred Spirits is an exhibition on Dr. Sun Yat Sen and his supporters in Japan and Singapore. It highlights the roles the two countries played in Dr. Sun's revolutionary activities, and showcases close to 90 rare artefacts which are on display in Singapore for the first time. This exhibition is presented by the memorial hall in partnership with Miyazaki Brothers Museum (Arao), Nagasaki Museum of History & Culture, Sun Yat-sen Memorial Hall (Kobe), Ms. Kosaka Ayano, Dr. Nakano Masahiko and the family of Miyazaki Toten, with the support from the Embassy of Japan in Singapore, the Japanese Association, Singapore and Friends of Museum (Singapore), Japanese Docents.

Citizens and Permanent Residents (PRs) enjoy free admission to this exhibition.

Curator Tours

9 & 17
November 2013
2pm – 4pm

– Sun Yat Sen
Nanyang
Memorial Hall

– Admission
charges apply

Join the Sun Yat Sen Nanyang Memorial Hall's curator for an insider tour of the special exhibition, *Kindred Spirits*. Discover the roles Singapore and Japan played in Dr. Sun Yat Sen's revolutionary activities, and hear the stories behind these artefacts.

Registration is required. To register, please email: NHB.WQY@nhb.gov.sg to reserve a space and pay on the day of the programme.

Heritage Collection by Banyan Tree

Address: Heritage Collection by Banyan Tree is a brain child of Banyan Tree Gallery to promote and preserve Asia's cultural legacy through tourism retailing. This lifestyle-themed shop showcases Asia's rich and diverse cultural heritage through unique gifts, ethnic style apparels and elegant homeware designed to inspire, educate and excite the imagination of museum visitors of all ages. Choose from a variety of products ranging from stationery collections featuring Old Singapore images to accessories inspired by the beauty and elegance of Singapore's national flower, Vanda Miss Joaquim.

—

Tel: (65) 6336 3670

Email: gallery-nm@banyantree.com

Website: btheritagecollection.com

—

Opening Hours: Mon – Sun: 10am – 7pm (Til 9pm on Fridays)

True Blue Shoppe @ Peranakan Museum

Tradition in a bag!

Address: 39 Armenian Street Singapore 179941

—

Tel: (65) 6337 7454

Website: www.trueblue-cuisine.com

—

Opening Hours: Mon – Sun: 10am – 7pm (Till 9pm on Fridays)

You can't take the Peranakan Museum home, but you can take away the best of all things Peranakan just by visiting the charming True Blue Shoppe.

Located near the entrance of the Peranakan Museum, True Blue Shoppe is a treasure trove of traditional sarongs, fine antique jewellery, porcelain in the vibrant hues Peranakans are famous for, and true blue souvenirs every Peranakan lover would appreciate.



Select Books

Select Books and Cafe

Address: 51 Armenian Street Singapore 179939

—

Tel: (65) 6337 9319

Website: selectbooks.com.sg

—

Opening Hours: Mondays – Saturdays: 9.30am – 6.30pm Sundays: 10am – 4pm

Select Books is one of Southeast Asia's oldest and best-known independent bookshops. Set up in 1976, it is recognised around the world as the leading book-store for titles on the region. Its new location at 51 Armenian Street features a wide and eclectic collection of books on Asian art, culture, history and society, as well as literary works from prominent writers from this part of the world. Together with titles on regional cuisine (including cookbooks), flora and fauna, performing arts and children's stories, Select is an indispensable destination for book lovers and anyone who wants to understand more about Southeast Asia.

SUPERMAMA

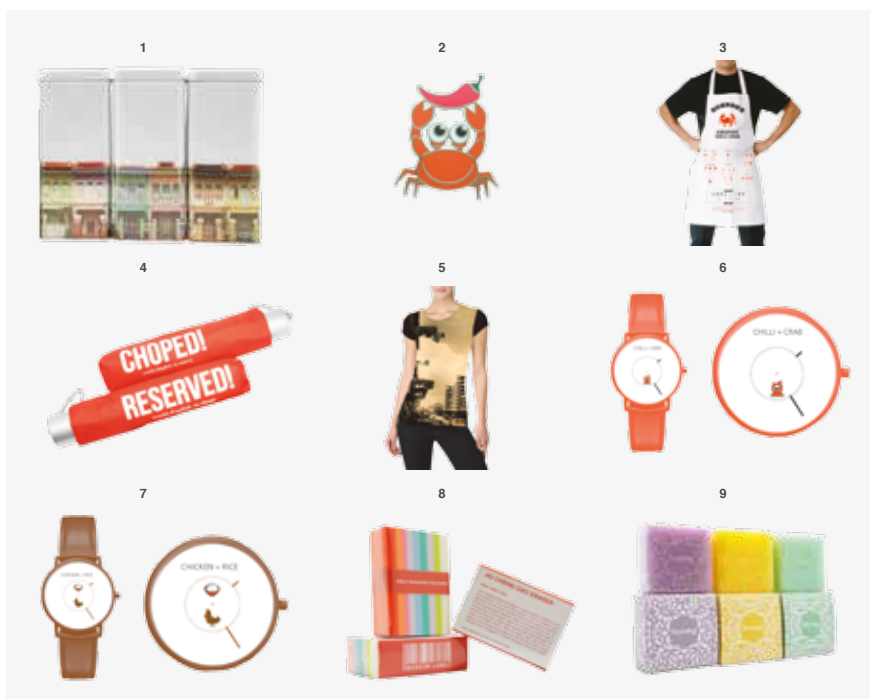
Address: #01-04, 8 Queen Street

—

Email: info@supermama.sg

SUPERMAMA is a retail gallery that collects and curates beautiful objects from around the world for people in Singapore. They range from brass stationery, handcrafted ceramics, picture books that give a different perspective to handmade bow-ties and many more. Located at the heart of the city centre, SUPERMAMA hopes to be a place for anyone to find peace and their quiet moments to take in the little yet beautiful creation in life. Come on in and take in the mama experience!

GREAT SINGAPORE SOUVENIRS



Besides sharing the same acronym commonly known by many as the Great Singapore Sale – an annual shopping season in Singapore, Great Singapore Souvenirs celebrates Singapore through the exploration of local quirks and habits, and re-interprets them into merchandise that everyone can shop for and have fun with. This collection is about meaningful and iconic souvenirs that are unique to Singapore's heritage, culture and the Singaporean identity and lifestyle.

- 1 Shophouse Tin Can
- 2 Chilli + Crab Pin
- 3 Chilli Crab Recipe Apron
- 4 Chopped! Umbrella
- 5 1960s Flats in Singapore Tee
- 6 Chilli + Crab Watch
- 7 Chicken + Rice Watch
- 8 Jiu Cheng Gao Eraser
- 9 Sayang Soap



MUSEUM LABEL tells the Singapore story through merchandise inspired by Singapore's national collection and our heritage of art and culture, through well-designed everyday objects to enrich everyone's life, everyday, everywhere.

PATTERNS OF HERITAGE



Patterns of Heritage is a series of merchandise inspired by the prints of the artefacts in Singapore's national collection, showing the deep roots of today's globalised world and the amazing impact of cultural exchange.

Indian Prints

Loved for their bright and unfading colours, Indian textiles became treasured heirlooms, passed down from generation to generation. Their popularity and profound influence left an indelible mark, not only on the way we do business, but also on how we dress ourselves and decorate our homes.

Peranakan Prints

Beadwork is an important element in Peranakan fashion. Designs may be inspired by China, local tastes, or the West. This cross-cultural mix is what makes for the beauty and wonder of the Peranakan world. Such is the inspiration behind the Museum Label collection, reflecting the multiplicity that is Singapore today.

Patterns of Heritage Series:

- Tee-shirts
- Umbrellas
- Mini Gusset Bag
- L-Shaped Folders
- Epoxy Magnet Sets
- Coaster Sets
- Mugs
- Carpet Bookmarks

MUSEUM LABEL tells the Singapore story through merchandise inspired by Singapore's national collection and our heritage of art and culture, through well-designed everyday objects to enrich everyone's life, everyday, everywhere.

ASIAN CIVILISATIONS MUSEUM

1 Empress Place, Singapore 179555
Tel: 6332 7798

Bar Opium

An elegant bar that offers a spectacular view of the Singapore River and a stunning skyline. Excellent spot for chilling out and people-watching.

Tel: 6339 2876

Mon – Thu: 5pm – 2 am
Fri & Sat: 5pm – 3am
Sun: 5pm – 1am

Siem Reap II

Enjoy café-style alfresco dining in a relaxed and comfortable setting. Feast on your favourite Asian fusion cuisine while taking in a panoramic vista of the Singapore River.

Tel: 6338 7596

Mon – Sun: 11am – 11pm

Waterfront Restaurant

Fine-dine in a grand atmosphere of chandeliers, Buddha statues and rare antiques with the restaurant's authentic Indochinese cuisine. Impress your guests with this gastronomic experience.

Tel: 6339 1720

Mon – Fri: Noon – 3pm
Sun – Thu: 6.30pm – 11.30pm
Fri & Sat: 6.30pm – 12.30am



NATIONAL MUSEUM OF SINGAPORE

93 Stamford Road, Singapore 178897
Tel: 6332 3659



Chef Chan's Restaurant

Enjoy fine Cantonese cuisine in an ambience reminiscent of China's noblemen of old. Aptly located in the National Museum, among centuries-old wooden partitions, antique sideboards with deep carvings, metal and wooden motif screens, art deco golden chandeliers, exquisite jade and silver table settings, Chef Chan offers a unique dining experience in a beautifully traditional setting.

Tel: 6333 0073
www.chefchanrestaurant.com.sg

Mon – Sun:
Lunch: 11.45am – 2.30pm
Dinner: 6.15pm – 9.30pm

Dim Sum, Lunch (6 set menus), Lunch & Dinner À la Carte, Dinner (6 set menus).
Reservations preferred.
Now also open on Sunday.

Flutes Restaurant.Bar

Named in 2013 as one of the '101 Best Restaurants in Asia', Flutes presents a modern European inspired smart casual dining experience with a menu featuring the favourite foods of Queen Victoria and Queen Elizabeth II. Enjoy a delectable range of Devonshire teas complete with clotted cream each afternoon in the spaces where Singapore's history comes alive. Flutes' hallmark – good food, good wines, excellent service, and great ambience!

Tel: 6338 8770
www.flutes.com.sg

Mon – Thu: 11.30am – 10pm (last orders)
Fri: 11.30am – 10.30pm (last orders)
Sat: 10am – 10.30pm (last orders)
Sun: 10am – 5pm (last orders)

Executive Lunch or À la carte
Daily English Afternoon Tea
À la carte Dinner or The Chef's Table with Wine Pairing Option
Weekend Relaxing Brunch,
Sunday Roast



Food For Thought

Food For Thought's latest branch at the National Museum of Singapore balances nostalgia with innovation in its menu offerings as well as restaurant design. The food is inspired by modern Singapore, created with bold Southeast Asian flavours layered with globalised influences, tasted in dishes like the chwee kueh inspired Brown Butter Chye Poh Prawn Salad and Pancakes with Mee Chiang Kueh Butter and Spiced Gula Melaka Syrup.

Tel: 6338 9887
Email:
together@foodforthought.com.sg

Mon – Sun: 10am – 10pm
(last orders at 9pm)

PERANAKAN MUSEUM

39 Armenian Street, Singapore 179941
Tel: 6332 7591



True Blue Pantry

Take refreshment after a tour of the museum. True Blue Pantry offers fruit juices, floral teas, local coffee and soft drinks. If you need a light bite, try their nyonya kueh kueh. Salads and quick nyonya meals are also available.

Tel: 6337 7514

Mon – Sun: 10am – 7pm
(Till 9pm on Fridays)

True Blue Cuisine

True Blue invites you to experience the life of the Peranakans through the restaurant's charming décor and authentic Peranakan delicacies, based on recipes passed down the generations.

Tel: 6440 0449/4548

Email: stfrancisent@yahoo.com

Mon – Sun: 11.30am – 2.30pm;
6pm – 9.30pm



Le Bistrot Du Sommelier

Le Bistrot Du Sommelier offers an eclectic mix of seasonal dishes, and also 'terroir' specialties such as the Veal Trotter stuffed with sweetbreads. The newly opened Rillettes Bar is a unique concept in Singapore, and is open all day offering a wide selection of home-made rillettes, terrines, patés and many more exciting cold cuts are available for take away or to be consumed on the premises with a glass of wine.

Tel: 6333 1982

www.lebistrot dusommelier.com

Mon – Sat:
Lunch: 12pm – 3pm
Dinner: 6pm – 11pm
Rillettes Bar: 12pm – 12am

SINGAPORE ART MUSEUM

71 Bras Basah Road, Singapore 189555
Tel: 6332 3222

Trattoria Lafiandra

Owned by Chef Cataldo and Brenda Lafiandra, the 42-seater Trattoria Lafiandra al Museo has an extensive selection of antipasti, homemade pasta, risotto and main courses, offering a wide and exciting selection of Italian fare.

Tel: 6884 4035

www.lafiandra.com.sg

Mon – Sun: 11.30am – 3pm;
6pm – 11pm



Dôme Café

Dôme introduces a rustic coffee haven for executives on the go. Relax in style with al fresco dining or choose a speedy take away. Dôme offers a comprehensive range of freshly baked breads, pastries, cakes and pizzas which complement our range of gourmet coffees. Signature items include Focaccia Gourmet Sandwiches, Dôme Gourmet Pie, Caesar Salad and Chocolate Brownies.

Tel: 6339 0792

www.dome.sg

Mon – Sun:
Lunch: 12pm – 2.30pm
Dinner: 6pm – 10.30pm

7 Kickstart, Your Community Café

Scrumptious food and perfect brews in a homely environment are best served with a dash of great company. Kick-start your mornings or rev up your engines for the rest of the work day at this cozy café where smiles matter as much as what's on the menu.

Tel: 8389 7877

www.7kickstart.com

Mon – Fri: 8am – 6pm
Sat: 9.30am – 5pm
Sun & Public Holidays: Closed



SINGAPORE ART MUSEUM AT 8Q

8 Queen Street, Singapore 188335
Tel: 6332 3200



fast Food For Thought

Opened on 1 June 2013, fast Food For Thought (fFFT) is a reboot of the previous Food For Thought at 8Q. fFFT is a burger shack that serves fast food favourites with a difference. Burgers here are served on fresh baked potato buns, topped with quality meats and sauces made from scratch. Milkshakes are thick with real milk and ice-cream. Must-tries include the kopi-gao shake, peanut butter banana trifle and slow-roasted pulled pork burger.

— www.foodforthought.com.sg
www.facebook.com/fastFFT

— Tue – Sun: 11am – 7pm



Standing Sushi Bar

Beautifully-sliced, perfectly-formed, deliciously-made... Every piece of sushi at Standing Sushi Bar is a piece of art. Indulge in sake, enjoy a few sticks of robatayaki, and delight in our sushi selections. Fresh fish, every day.

— www.standingsushibar.com

— Mon – Sun:
Lunch: 12pm – 2.30pm
Dinner: 6pm – 10.30pm

National Heritage Board milestones

2013 — Celebrating 20 years of heritage with you.

Since 1 August 1993, the National Heritage Board has been making heritage accessible and enjoyable for all. Relive our memorable journey with these significant NHB milestones over the last 20 years.

1993

The Birth of NHB

1996

Singapore Art Museum opens

1999

Launch of Singapore's first National Heritage Trail — Civic District Trail

1998

National Archives of Singapore moves to its new home at Canning Rise

1997

Asian Civilisations Museum opens at Armenian Street

2000

Heritage Conservation Centre opens, Singapore Philatelic Museum joins NHB

2002

Reflections at Bukit Chandu opens

2003

Asian Civilisations Museum relocates to Empress Place

2008

Peranakan Museum and SAM at 8Q open, and Night Festival is launched

2006

Memories at Old Ford Factory opens and the National Museum of Singapore re-opens

2004

Launch of Singapore HeritageFest

2009

Preservation of Monuments Board and Heritage Institutions join NHB

2011

Groundbreaking ceremony of the National Art Gallery, Singapore

2013

Launch of first community museum — Our Museum @ Taman Jurong

All Citizens and Permanent Residents (PRs) enjoy free* admission to the national museums and heritage institutions.

*Selected special exhibitions are chargeable. Please approach museums' front desks for more information.

Free admission for all!

Open House Days at all National Heritage Board museums and institutions:

2 November 2013 — Deepavali Open House

25 December 2013 — Christmas Day Open House

Asian Civilisations Museum



6

Housed in a magnificently restored colonial building by the Singapore River, the Asian Civilisations Museum traces the rich artistic heritage of Asia, especially Singapore's diverse cultural roots.

Explore Southeast Asia, China, South Asia, West Asia, and the Peranakan world through the museum's collection of works of art and a varied exhibition programme.

Address
1 Empress Place,
Singapore 179555
Tel: 6332 7798 / 6332 3275
www.acm.org.sg

Admission Charges

- Adult: \$8
Joint admission tickets to ACM and the Peranakan Museum are also available. Please enquire at the museum's front desk.
- Discounted admission on Fridays from 7pm – 9pm.
- 50% off admission prices for foreign seniors aged 60 and above, and foreign students.
- Free admission for all Citizens and Permanent Residents (PRs), and visitors aged 6 years and below.
- Free guided tours from Mon – Sun. Please call 6332 7798 to enquire.

Opening Hours

Mon – Sun: 10am – 7pm
(Till 9pm on Fridays)

Getting there

By Bus
Alight along Collyer Quay or Fullerton Road.
SBS: 100, 130, 131
SMRT: 75, 167

– By MRT

The Asian Civilisations Museum is a 5-minute walk from Raffles Place MRT station.

Singapore Art Museum



2

The Singapore Art Museum (SAM) focuses on the creation of art in the present moment. It advocates and presents the contemporary art practices of Singapore, Southeast Asia and Asia, situating them within the global context of art making today. SAM has built up one of the most important collections of contemporary art from the region, and its programming aims to introduce new artistic practices and styles to the public, as well as nurturing discerning audiences for contemporary art. SAM is also organiser of the Singapore Biennale 2013 and the past edition in 2011.

Address

71 Bras Basah Road,
Singapore 189555
SAM at 8Q is located at 8 Queen Street,
Singapore 188535
Tel: 6332 3222
www.singaporeartmuseum.sg

Admission Charges

- Adult: \$10
- Groups of 20 or more: 20% off adult admission charges
- Free admission on Fridays from 7pm – 9pm.
- 50% off admission prices for foreign seniors aged 60 and above, and foreign students.
- Free admission for all Citizens and Permanent Residents (PRs), and visitors aged 6 years and below.

Opening Hours

Mon – Sun: 10am – 7pm
(till 9pm on Fridays)

Getting there

By Bus
Alight along Bras Basah Road.
SBS: 7, 14, 16, 36, 111, 131, 162, 175, 502, 518
SMRT: 77, 167, 171, 700
– By MRT
Singapore Art Museum is a 2-minute walk from Bras Basah MRT station and a 10-minute walk from Dhoby Ghaut, Bugis or City Hall MRT stations.

Malay Heritage Centre



*Not found on map

The Malay Heritage Centre (MHC) showcases the history, culture and contributions of the Malay community within the context of Singapore's history and multi-cultural society. It houses a collection of interesting artefacts that support its new focus on Kampong Gelam's history as a bustling port town integral to the development of the Malay community as well as Singapore's connections to the region.

Address

85 Sultan Gate,
Singapore 198501
Tel: 6391 0450
www.malayheritage.org.sg

Admission Charges

- Adult: \$4
- Foreign senior citizens above 60 years old: \$2
- Foreign students and children 12 years and below: \$2
- Free admission for all Citizens and Permanent Residents (PRs), and visitors aged 6 years and below.
- For group guided tours, please call 6391 0450.

Opening Hours

Tue – Sun: 10am – 6pm
(Closed on Mondays)

National Museum of Singapore



1

The National Museum of Singapore is the nation's oldest museum with a progressive mind. It is custodian of 10 National Treasures, and its Singapore History and Living Galleries adopt cutting-edge and multi-perspective ways of presenting history and culture to redefine conventional museum experience.

Address

93 Stamford Road,
Singapore 178897
Tel: 6332 3659
www.nationalmuseum.sg

Admission Charges

- Adult: \$10
- \$5 for foreign seniors aged 60 and above, and foreign students.
- \$30 for family package (group admission of up to 5 persons)
- Citizens, Permanent Residents (PRs) and children of 6 years of age and under enjoy free

admission to permanent galleries and selected exhibitions*.

- Free admission to Singapore Living Galleries from 6pm – 8pm daily.
- Free guided tours from Mon – Sun. Please call 6332 3659 to enquire.

* Admission charges apply to special exhibitions. For these exhibitions, free admission continues to apply to citizens and PRs who are students, teachers, senior citizens and NSFs as well as children of 6 years of age and under.

Opening Hours

Singapore History Gallery:
10am – 6pm daily
(last entry: 5.30pm)

–
Singapore Living Galleries:
10am – 8pm daily
(last entry: 7.30pm)

Getting there

- By Bus
 - YMCA Bus-stop (08041)
SBS: 7, 14, 14E, 16, 36, 64, 65, 111, 124, 128, 139, 162, 162M, 174, 174E, 175
SMRT: 77, 106, 167, 171, 190, 700, 700A, NR6, NR7
 - SMU Bus-stop (04121)
SBS: 7, 14, 14E, 16, 36, 111, 124, 128, 131, 162, 162M, 166, 174, 174E, 175
SMRT: 77, 106, 167, 171, 190, 700, 700A, 857, NR7

– By MRT

The National Museum of Singapore is a 5-minute walk from Bras Basah or Dhoby Ghaut MRT stations and a 10-minute walk from City Hall MRT station.

Peranakan Museum



4

Get a feel of the vibrant Peranakan heritage and culture at the world's first national Peranakan Museum right here in Singapore. Immerse yourself in the colourful history of babas and nyonyas, and be awed by exquisite displays of intricately crafted jewellery, beaded slippers, gold and silver ornaments, textiles, ceramics and ornate furniture.

Address

39 Armenian Street,
Singapore 179941
Tel: 6332 7591 / 6332 3275
www.peranakanmuseum.sg

Admission Charges

- Adult: \$6
Joint admission tickets to ACM and TPM are also available. Please enquire at the museum's front desk.
- Discounted admission on Fridays from 7pm–9pm.
- 50% off admission prices for foreign seniors aged 60 and above, and foreign students.
- Free admission for all Citizens and Permanent Residents (PRs), and visitors aged 6 years and below.
- Free guided tours from Mon–Sun. Please call 6332 7591 to enquire.

Opening Hours

Mon – Sun: 10am – 7pm
(Till 9pm on Fridays)

Getting there

By Bus
Alight opposite Singapore Management University.
SBS: 7, 14, 16, 36, 124, 131, 147, 162, 166, 174
SMRT: 61, 77, 167, 171, 190, 700

– By MRT

The Peranakan Museum is a 5-minute walk from Bras Basah MRT station and a 10-minute walk from City Hall MRT station.

Reflections at Bukit Chandu



*Not found on map

Journey back in time to World War II in 1942 when 1,400 soldiers of the Malay Regiment valiantly opposed 13,000 Japanese soldiers. Experience the Battle of Pasir Panjang and walk through the galleries displaying exhibits of photographs, maps, and information detailing the life of the Malay Regiment and the defence of Singapore.

Address

31-K Pepys Road,
Singapore 118458
Tel: 6375 2510
www.nhb.gov.sg/NHBPortal/
Museums/Reflectionsat
BukitChandu

Admission Charges

- Adult: \$2
- Foreign students: \$1
- Foreign seniors aged 60 and above: \$1
- Free admission for all Citizens and Permanent Residents (PRs), and visitors aged 6 years and below.

Opening Hours

Tue – Sun: 9am – 5.30pm

Getting there

By Bus
Alight in front of Pasir Panjang Neighbourhood Police Post (109A Pasir Panjang Road).

- Bus-stop (HarbourFront Centre)
SBS: 10, 30, 143
SMRT: 188

- Bus-stop (Raffles Place MRT station)
SBS: 10
- Bus-stop (City Hall MRT station)
SBS: 51
- Bus-stop (Bukit Merah Interchange)
SMRT: 176

– By MRT

Reflections at Bukit Chandu is a 20 minute walk from Pasir Panjang MRT station. Alternatively, alight at Harbourfront MRT station and take the listed buses from HarbourFront Centre.

Sun Yat Sen Nanyang Memorial Hall



*Not found on map

The Sun Yat Sen Nanyang Memorial Hall was where the Tong Meng Hui Singapore branch was first established in 1906. Home to Dr. Sun Yat Sen whenever he visited Singapore, this building presently houses five galleries, depicting the vital role played by Singapore and Nanyang in the 1911 Revolution.

Address

12 Tai Gin Road,
Singapore 327874
Tel: (65) 6256 7377
www.wanqingyuan.org.sg

Opening Hours

Tue – Sun: 10am – 5pm
(Closed on Mondays)

Admission Charges

- Adult: \$4
- Foreign senior citizens above 60 years old: \$2
- Foreign students: \$2

- Free admission for all Citizens and Permanent Residents (PRs), and visitors aged 6 years and below.
- For group visits, please email us at NHB_WQY@nhb.gov.sg to make a booking.

Getting there

By Bus
Alight at the bus stop at Zhong Shan Park along Balestier Road, or after the Kwan Im Tng Temple.
SBS: 21, 130, 131, 139, 145, 186
– By MRT
The Sun Yat Sen Nanyang Memorial Hall is a 15 – 20 minute walk from Toa Payoh/ Novena MRT stations.

GET THE 3-DAY MUSEUM PASS NOW!

The National Heritage Board has a 3-day museum pass that provides unlimited access to all six NHB museums over a period of three days. Each individual pass costs \$20, while a family pass (admits up to 5 pax) costs only \$50! Purchase them at any NHB museum's front desk.

BOUGHT THE NHB 3-DAY MUSEUM PASS?

To make full use of your bargain deal, we offer you the Express option.

Day 1

- Begin at the **National Museum of Singapore**. The Singapore

History Gallery and four Living Galleries give you a colourful overview of the nation's past, traditions and culture.

- Cross over to the **Peranakan Museum**. Know your Peranakan friends better through stunning displays of Peranakan jewellery, intricate porcelain collections and Peranakan icons in Singapore. Hungry? Dine at True Blue Cuisine next door!
- Head to the **Singapore Philatelic Museum**, and take pleasure in viewing miniature pieces of art in the form of stamps.

Day 2

- View some of the best collections of Southeast Asian contemporary art in the

Singapore Art Museum. Lunch at fast Food For Thought or Trattoria Lafiandra.

- Scoot off to the **Asian Civilisations Museum** for an afternoon's worth of Asia's rich offerings. Find out how Singapore became a multi-ethnic country with origins from China, Southeast, South and West Asia.

Day 3

- Go beyond the city and back in time at **Reflections at Bukit Chandu**. See how the Japanese invaded Singapore, the final Battle of Pasir Panjang and how the British surrendered on 15 February 1942.

Museums

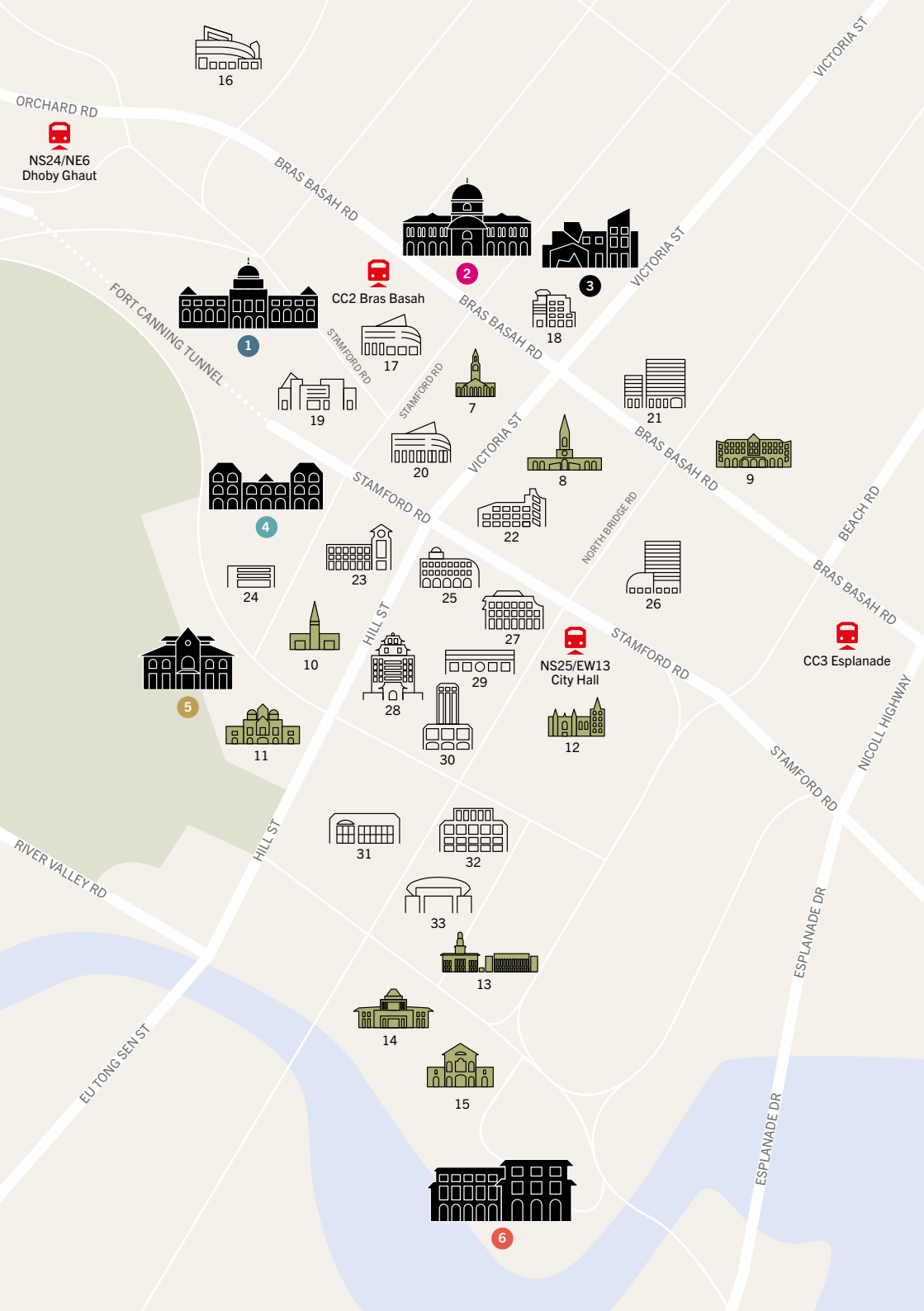
- 1 **National Museum of Singapore**
- 2 **Singapore Art Museum**
- 3 **SAM at 8Q**
- 4 **Peranakan Museum**
- 5 **Singapore Philatelic Museum**
- 6 **Asian Civilisations Museum**

Monuments

- 7 Cathedral of the Good Shepherd
- 8 Chijmes
- 9 Raffles Hotel
- 10 Armenian Church
- 11 Central Fire Station
- 12 St Andrew's Cathedral
- 13 The National Art Gallery, Singapore (Opening in 2015)
- 14 Parliament House
- 15 The Arts House

Landmarks

- 16 The Cathay
- 17 SMU Li Ka Shing Library
- 18 NTUC Income Centre
- 19 SMU School of Accountancy-Law
- 20 SMU Lee Kong Chian School of Business
- 21 Carlton Hotel
- 22 SMRT Headquarters Building
- 23 Stamford Court
- 24 Bible House
- 25 Stamford House
- 26 Raffles City
- 27 Shopping Centre
- 27 Capitol Building
- 28 Singapore Chinese Chamber of Commerce Building
- 29 Capitol Centre
- 30 Peninsula Plaza
- 31 Funan DigitaLife Mall
- 32 The Adelphi
- 33 Supreme Court



ARTISTS

Ahmad Abu Bakar
Irwan Ahmett & Tita Salina
Sookoon Ang
AX(IS) Art Project
Boo Junfeng
Chi Too
Sharon Chin
Chris Chong Chan Fui

Kiri Dalena
Marisa Darasavath
Leslie de Chavez
Guo Yixiu
Iswanto Hartono
& Raqs Media Collective
Adrian Ho
Dusadee Huntrakul
Jainal Amambing
Joo Choon Lin
Toni Kanwa
Khvay Samnang
KOMVNI
Moon Kyungwon
& Jeon Joonho
Lai Chee Kien

Erica Lai
Lam Hieu Thuan
Urich Lau
Le Brothers
Sean Lee
Lee Wen
Liao Jiekai
Hazel Lim
Lim Shing Ee &
Kazunori Takeishi
Nikki Luna
Manny Montelibano
Kumari Nahappan
Nasirun
Ng Joon Kiat
Krit Ngamsom
Nge Lay
Nguyen Huy An
Nguyen Oanh Phi Phi
Nguyen Thi Hoai Tho
Nguyen Tran Nam
Nguyen Trinh Thi
UuDam Tran Nguyen
Nipan Oranniwesna

CURATORS

Angrkit
Ajchariyasophon
Aminuddin TH
Siregar "Ucok"
Aye Ko
David Chew
Charlie Co
Kawayan de Guia
Fairuz Iman Ismail
Faizal Sidik
Ark Fongsmut
Abraham Garcia Jr.
Erin Gleeson
Tamares Goh
Misouda
Heuangsooukhoun
Michelle Ho
Khairuddin Hari
Mia Maria
Nguyen Nhu Huy
Claro Ramirez
Seng Yu Jin
Tan Boon Hui
Tan Siuli
Tay Sweet Lin
Charmaine Toh
Joyce Toh
Tran Luong
Naomi Wang
Yee I-Lann

Anon Pairot,
Kamin Lertchaiprasert,
Patama Roonrakwit,
Samart Suwannarat &
Zcongklod Bangyikhan
Bounpaul Phothyzan
Po Po
Poodien
Eko Prawoto
Anggun Priambodo
François Roche
Rosid
Sai Hua Kuan
Albert Samreth
Tisna Sanjaya
Angie Seah
Jeremy Sharma
Shieko Reto
Siete Pesos
Leroy Sofyan
Shirley Soh
Speak Cryptic
Prateep
Suthathongthai
Svay Sareth
Talaandig Artists
Grace Tan
Royston Tan
Tan Wei Kheng
Boonsri Tangtrongsin
Tay Bee Aye
teamLab
Tran Tuan
Nopchai Ungkavatanapong
Suzann Victor
Oscar Villamiel
Vu Hong Ninh
Ken + Julia Yonetani
Mahardika Yudha
Robert Zhao Renhui
ZNC
Zulkifly Yusoff

Organised by

sam
singaporeartmuseum

Supported by

mccy
Ministry of Culture, Community and Youth

NATIONAL ARTS COUNCIL
SINGAPORE



20 YEARS OF
HERITAGE
with YOU
1993-2013

**26 OCTOBER 2013
to 16 FEBRUARY 2014**

**VERNISSAGE
24 & 25 OCTOBER 2013**

**BRAS BASAH BUGIS PRECINCT
Our Museum @ Taman Jurong
www.singaporebiennale.org**

Follow

f facebook.com/SingaporeBiennaleSB

@IAmASAMbody, #singaporebiennale2013

t singaporebiennale2013.tumblr.com

CONTACT

Singapore Biennale 2013

c/o Singapore Art Museum

61 Stamford Road #02-02

Stamford Court, Singapore 178892

Tel: +65 6332 3222 Fax: +65 6334 7919

sb2013@nhb.gov.sg